



Online Punch Bridge

Models : 66"/72" 46" 36" 26"

	BGP-26 series	BGP-36-D3	BGP-36-D4
--	---------------	-----------	-----------

punching			
Repeat positioning accuracy	0.01 mm		
Air supply mode	external air supply (>0.3MPa)		
Plate output direction	3 or 4 directions (optional)		
Punching die standard	BACHER punching system / customer request		
Punching mode	air pressure punching		
Control mode	single machine	online	
Plates			
Max. Plate size	670 X 560 mm	925 X 670 mm	925 X 670 mm
Min. Plate size	240 X 320 mm	240 X 320 mm	240 X 320 mm
Plate thickness	0.15-0.40 mm	0.15-0.40 mm	0.15-0.40 mm

Power & working condition	
Power supply	single phase AC 220±5% 50/60Hz
Rated power	800 W
Operation temperature	18~25℃
Range humidity	20~70% (no condensation)

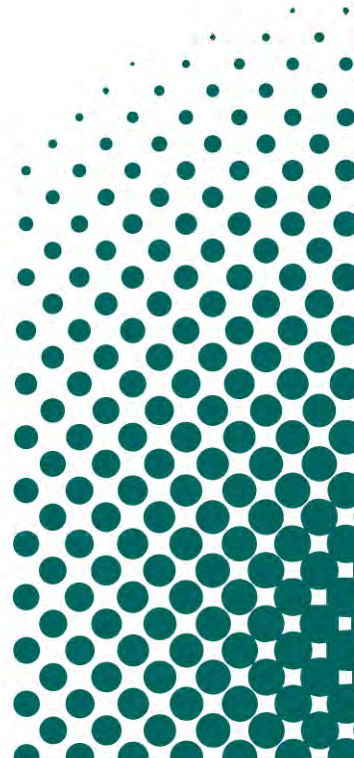
Size & weight			
Dimension (L x W x H)	1500 X 950 X 1050 mm	1800 X 1170 X 1050 mm	1800 X 1170 X 1050 mm
Net weight	200 kg	200 kg	200 kg

	BGP-46-D3	BGP-46-D4	BGP-72 series
--	-----------	-----------	---------------

punching			
Repeat positioning accuracy	0.01 mm		
Air supply mode	external air supply (>0.3MPa)		
Plate output direction	3 or 4 directions (optional)		
Punching die standard	BACHER punching system / customer request		
Punching mode	air pressure punching		
Control mode			
Plates			
Max. Plate size	1160 X 940 mm	1160 X 940 mm	1850 X 1422 mm
Min. Plate size	450 X 370 mm	450 X 370 mm	650 X 550 mm
Plate thickness	0.15-0.40 mm	0.15-0.40 mm	0.15-0.40 mm

Power & working condition	
Power supply	single phase AC 220±5% 50/60Hz
Rated power	800 W
Operation temperature	18~25℃
Range humidity	20~70% (no condensation)

Size & weight			
Dimension (L x W x H)	2050 X 1420 X 1050 mm	2050 X 1420 X 1050 mm	2415 X 2050 X 1200 mm
Net weight	200 kg	200 kg	250 kg





Online Punch Bridge

The best use of working space

Multi-purpose design



Proprietary punch technology

- A 3-point registration system giving a punch accuracy of 0.01mm.
- Multi punch module capability on every system.
- 4-direction bridge enable the multi CTP or processing systems to be fully integrated inline.

